

Legend

Existing Features

- Subject Property
- Provincially Significant Wetland (MSW)
- Wetland (ORE, 2013)
- Easement
- Existing Roadway
- Existing Well Location (with 15 m buffer)
- Topographic Contours
- Water Course & Flow Direction

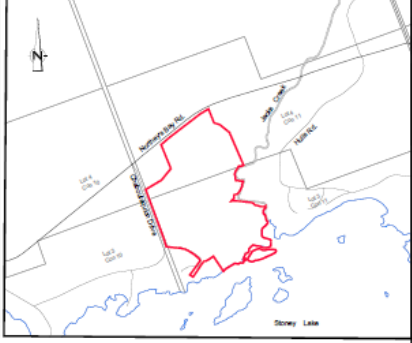
Proposed Vacant Land Condominium

- Exclusive Use Units 15-43ha

Proposed Common Elements Condominium

- Block 1 - Common Elements (swamion) 1.37ha
- Block 2 & 3 - Common Elements (roadway) 2.11ha
- Block 4 to 7 - Common Elements (open space) 10.11ha

Unit #	Area (ha)
1	0.44
2	0.56
3	0.51
4	0.55
5	0.55
6	0.60
7	0.57
8	0.51
9	0.55
10	0.50
11	0.51
12	0.53
13	0.52
14	0.50
15	0.53
16	0.40
17	1.44
18	0.46
19	0.47
20	1.40
21	0.50
22	0.51
23	1.55
24	0.57
25	0.51
26	0.49
27	0.43
28	0.54
29	0.50
30	0.53



OWNER'S CERTIFICATE
I hereby authorize EcoVue Consulting Services Inc. to prepare and submit this plan to the County of Peterborough.

Peter Vinters
Signature _____
Date _____

SURVEYOR'S CERTIFICATE
This Draft Plan accurately shows the boundaries of all lands proposed to be subdivided. Certified by:

Shawn M. O'Connor
Ontario Land Surveyor
Date _____

Submission Requirements

ADDITIONAL INFORMATION REQUIRED UNDER SECTION 54-17 (4-4) OF THE PLANNING ACT

- 1) As shown on this Draft Plan
- 2) As shown on this Draft Plan
- 3) As shown on this Draft Plan
- 4) Seasonal Roadster
- 5) As shown on this Draft Plan
- 6) As shown on this Draft Plan and the report by Oakridge Environmental (property is predominantly wooded).
- 7) Refer to report by Oakridge Environmental
- 8) Refer to report by Oakridge Environmental
- 9) As shown on this Draft Plan
- 10) Hydro, Telephone, Private Services
- 11) As shown on this Draft Plan

EcoVue Consulting Services Inc.
311 George St. N., Suite 200
Peterborough ON K9J 3Y3
Tel: 705-670-6343 Fax: 705-672-4343
www.ecovueconsulting.com

DRAWN BY: PM	PROJECT NO.: 14-1458
APPROVED BY: HS	HORIZ. SCALE: 1:1,500
REVISION DATE: April 9 2017	PLOT DATE: May 23 2017
Pilgrims Rest Condominium Part of Lot 3 and 4 Concession 11 Burleigh Ward, Township of North Kawartha	
Draft Plan of Condominium	
	P1