

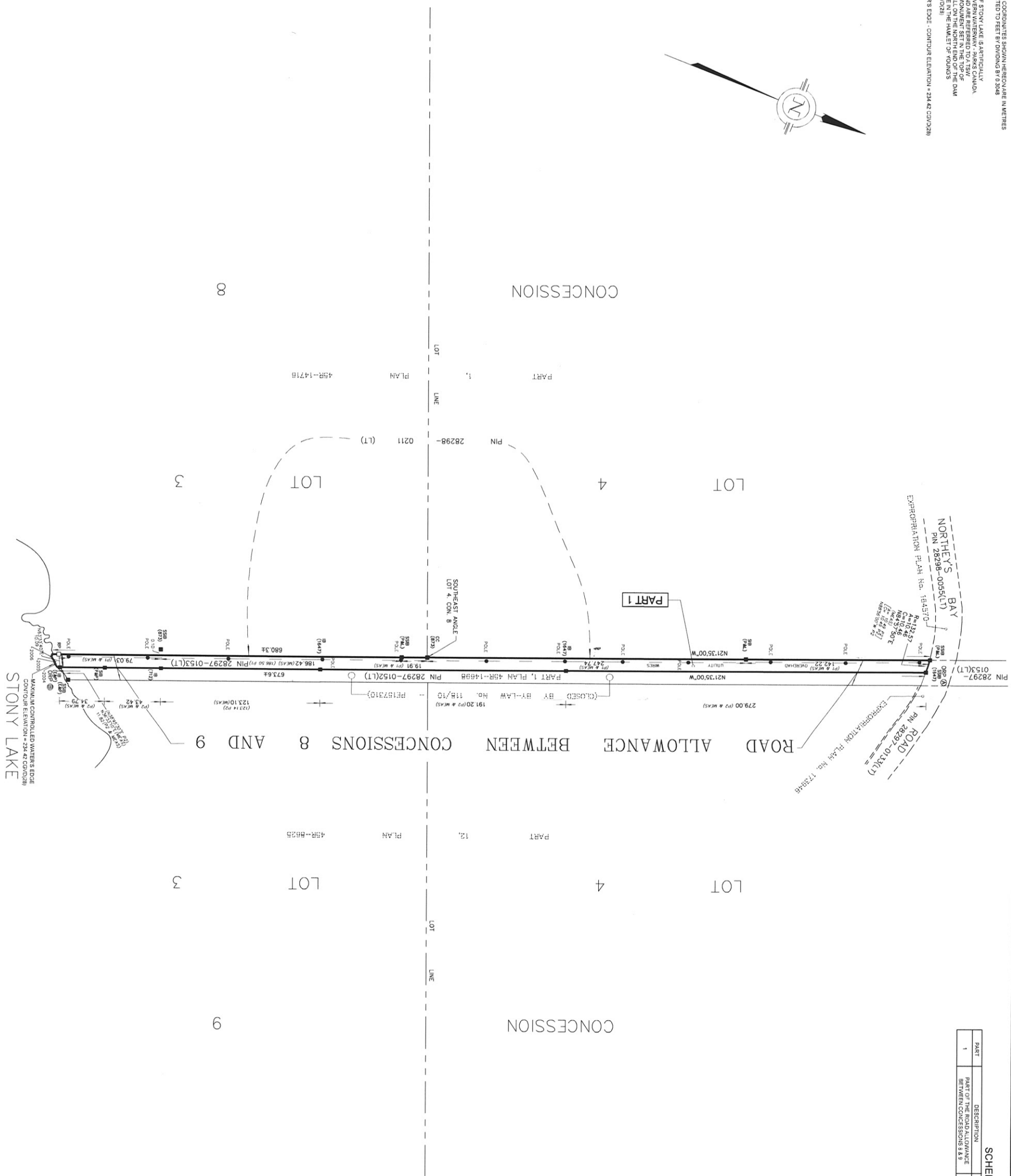
METRIC - DISTANCES AND COORDINATES SHOWN HEREON ARE IN METRES
CAN BE CONVERTED TO FEET BY DIVIDING BY 0.3048

NOTE: THE ELEVATION OF STONY LAKE IS APPROXIMATELY 200M ASL. ALL ELEVATIONS ARE REFERRED TO A TBM BENCHMARK BEING A BRASS MONUMENT SET IN THE TOP OF THE CURB OF CLEAR WALKWAY ON THE NORTH END OF THE DAM. THE POINT OF CLEAR WALKWAY IS THE POINT OF THE DAM. POINT ELEVATION = 235.86 COVD/28
MAXIMUM CONTROLLED WATERS EDGE - CONTROL ELEVATION = 234.42 COVD/28



CONCESSION

CONCESSION



SCHEDULE

PART	DESCRIPTION	FIN	AREA
1	PART OF THE ROAD ALLOWANCE BETWEEN CONCESSIONS 8 & 9	28227-0153(LT)	0.67 Ha

PLAN 45R-17576
Received and deposited
November 23rd, 2023
Tere Wendover
Representative for the
Land Registrar for the
Land Titles Division of
Peterborough (No 45)

PLAN OF SURVEY OF
ROAD ALLOWANCE BETWEEN
CONCESSIONS 8 & 9
GEOGRAPHIC TOWNSHIP OF BURLIEGH
(SOUTHERN DIVISION)
TOWNSHIP OF NORTH KAWARTHA
COUNTY OF PETERBOROUGH

SCALE: 1:1500
THE INTENDED PLOT SIZE OF THIS PLAN IS 800mm IN WIDTH BY 500mm IN HEIGHT WHEN PLOTTED AT A SCALE OF 1:1500
SURVEYORS CERTIFICATE

- I CERTIFY THAT
- THIS SURVEY AND PLAN ARE CORRECT AND ARE THE WORK OF THE SURVEYOR AND THE SURVEYORS AND I HAVE READ AND UNDERSTAND THE REGULATIONS MADE UNDER THEM
 - THE SURVEY WAS COMPLETED ON 23 JUNE 2023

SIGNED AT LAKENFIELD, ONTARIO
THIS 27th DAY OF JUNE, 2023
CHRISTOPHER MUSCLOW
ONTARIO LAND SURVEYOR

THIS PLAN OF SURVEY IS RELATED TO AOLS PLAN SUBMISSION FORM NUMBER V-25124

LEGEND

- DENOTES SURVEY MONUMENT FOUND
- DENOTES SURVEY MONUMENT PLANNED
- WIT DENOTES WITNESS
- PAL DENOTES HERCE & VONS O.L.S
- 7/2 DENOTES S.W. QUARTER O.L.S
- 7/4 DENOTES N.W. QUARTER O.L.S
- 7/1 DENOTES E. QUARTER O.L.S
- 7/3 DENOTES W.A. BENDER O.L.S
- 1547 DENOTES J.B. FLEQUEL O.L.S
- P1 DENOTES P.L.V. 45R-14718
- P2 DENOTES P.L.V. 45R-14698
- COVD/28 DENOTES CANADIAN GEODETIC VERTICAL DATUM OF 1928

BEARINGS SHOWN HEREON ARE UTM GRID, DERIVED FROM REAL TIME NETWORK (RTN) OBSERVATIONS ON POINTS A AND B LISTED HEREON AND ARE REFERRED TO THE CENTRAL MERIDIAN OF UTM ZONE 17 81 WEST (LONGITUDE) NAD 83 (GNS EPOCH 2310.9)

FOR BEARING COMPARISONS, A ROTATION OF 7.707° COUNTER CLOCKWISE WAS APPLIED TO BEARINGS SHOWN ON P1 AND P2

DISTANCES SHOWN HEREON ARE GROUND DISTANCES AND CAN BE USED TO COMPUTE GRID DISTANCES BY MULTIPLYING BY A COMBINED SCALE FACTOR OF 1.0022298

INTEGRATION DATA

COORDINATES ARE DERIVED FROM GPS RTK OBSERVATIONS USING THE SMARTNET CORRECTION DATA AND ARE REFERRED TO UTM ZONE 17 (81W) LONGITUDE) NAD83 (GNS EPOCH 2310.9)

OBSERVED REFERENCE POINT (ORP) COORDINATE VALUES ARE TO RUPAL ACCURACY SPECIFICATION IN ACCORDANCE WITH SEC 14(2) OF CHREG 219/10

WATERS EDGE COORDINATES

POINT	NORTHING	EASTING
2004	4841295.21	732424.94
2005	4841295.16	732427.33
2006	4841291.51	732328.74

JBF SURVEYORS
3177 LAKENFIELD ROAD, BOX 70
LAKENFIELD, ONT. K0L 2H0
INFO@JBF.SURVEYORS.COM
WWW.JBF.SURVEYORS.COM
PROJ. # 8503RP