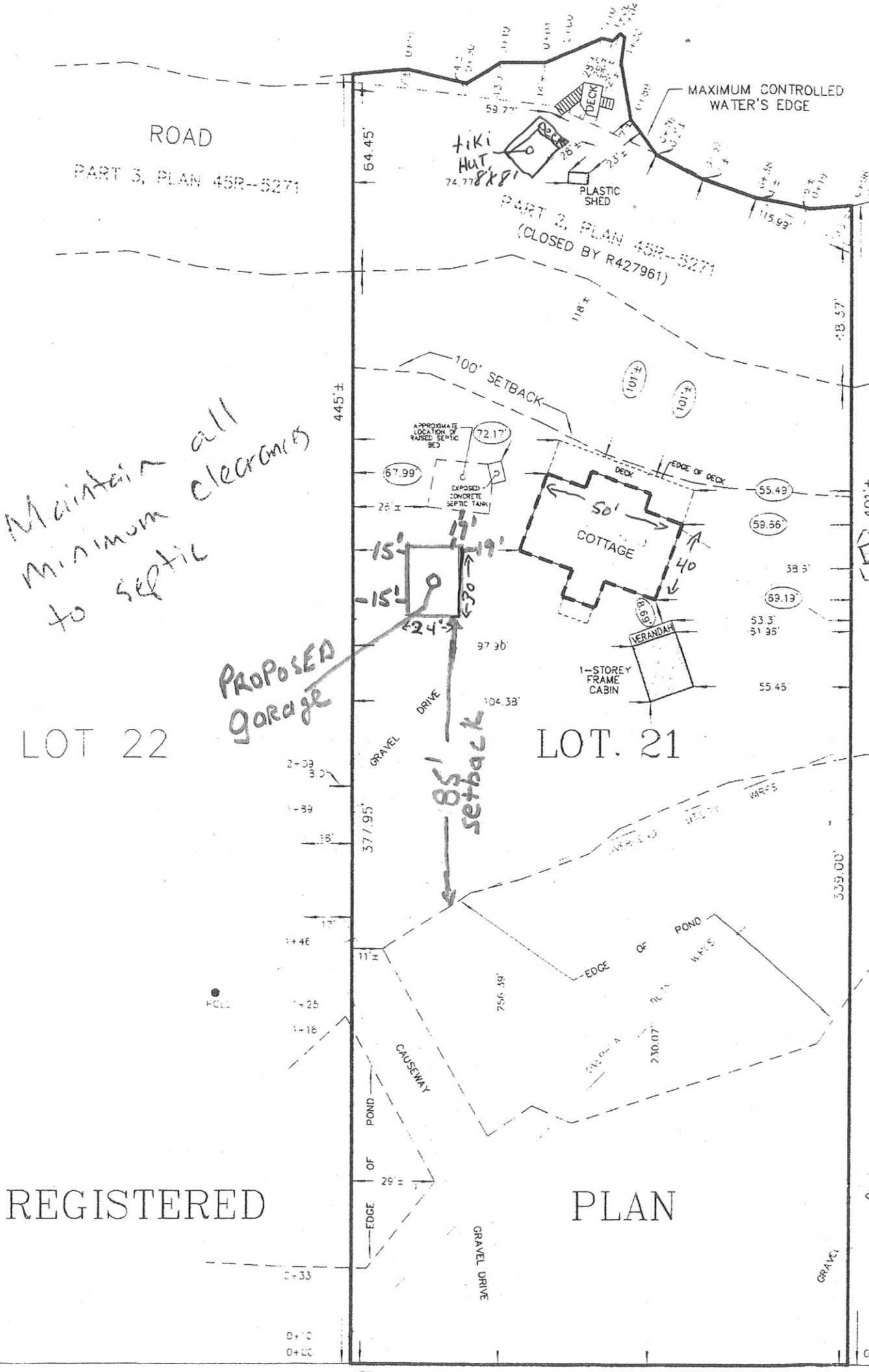


LOONCALL LAKE



ROAD
PART 3, PLAN 45R-5271

PART 2, PLAN 45R-5271
(CLOSED BY R427961)

MAXIMUM CONTROLLED
WATER'S EDGE

*Maintain all
minimum clearances
to septic*

*PROPOSED
Garage*

LOT 22

LOT. 21

REGISTERED

PLAN